



ISSN 1823-626X

Malaysian Journal of Fundamental and Applied Sciences

available online at <http://mjfas.ibnusina.utm.my>



Liquid Membrane Formulation for Removal of Kraft Lignin from Simulated Liquid Waste Solution

Norasikin Othman*, Ooi Zing Yi and Norlisa Harruddin

Centre of Lipid Engineering and Applied Research (CLEAR), Faculty of Chemical Engineering, Universiti Teknologi Malaysia, 81310 UTM Skudai, Johor Bahru, Malaysia.

Received 11 December 2012, Revised 12 February 2013, Accepted 15 February 2013, Available online 25 February 2013

ABSTRACT

Extraction of lignin from pulping wastewater as an external biofuel and in specialty chemicals will additionally benefit the chemical and automobile industries. Though lignin is nontoxic, it imparts brownish black colouration to the water bodies can cause environmental problems. Emulsion liquid membrane (ELM) technology is proposed to extract and recover the kraft lignin (KL) compound from the aqueous waste solution. This study investigated on development of a liquid membrane formulation for lignin removal from aqueous waste solution. Several parameters such as types and concentration of carrier, types of diluents and types of stripping agents were studied. The results showed that the most favorable liquid membrane formulation is using Aliquat 336 as extractant, kerosene as diluents and sodium bicarbonate (NaHCO_3) as stripping agent which is almost 93% of lignin was extracted.

| Kraft lignin | Formulation | Liquid-liquid Extraction | Liquid Membrane | Wastewater |

© 2013 Ibnu Sina Institute. All rights reserved.
<http://dx.doi.org/10.11113/mjfas.v9n1.80>

1. INTRODUCTION

Nowadays, pulp industry is the sixth largest polluter of water bodies after the oil, cement, leather, textile and steel industries [1]. The manufacture of pulp utilize large amount of fresh water which ranks third in the world, after the primary metal and the chemical industries [2]. Directly, a lot of wastewater is generated as high as 60 m³ wastewater per ton of pulp. Nearly 75% is discharged into water bodies and the rest were used for energy recovery [3].

The organic pollutants produced in Kraft and sulfite pulping processes mainly comprise compounds of lignin along with a small percentage of sucrose. It imparts brownish black colour to the water bodies and makes them unsuitable for usage in other processes. Nevertheless, when the effluents were discharged into the river, the dark coloration of lignin will reduce the sunlight passing through the water thus reduce the photosynthesis rate of the aquatic flora and fauna this resulted in the reduction of the oxygen availability and adversely affects aquatic flora and fauna [4].

Lignin is the second most abundant natural resources in the world after cellulose. Annually, approximately fifty million tons of lignins were produced as waste in the pulp industry alone. Most of the industrial lignin is being burned for the energy utilization [5]. However, the application of lignin to be burned as fuel is not economical, which can cost only up to 0.18 US\$/kg, meanwhile the uses of lignin in chemical conversion can

cost as high as 1.08 US\$/kg [6].

The new potential application of kraft lignin consists of its use as an anti-oxidant, resin, co-polymer, and a resource for carbon fibers. Besides, it also can be used in production of vanillin, animal feed pellets binder, pesticides, etc. The chemical structure of kraft lignin is shown in Fig. 1.

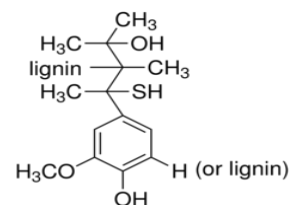


Fig. 1. Chemical structure of Kraft Lignin.

Recovery of kraft lignin from pulp industry had become more and more significant due to many application of the final product, at the same time it will solve the pollution problems. There were various methods developed for lignin removal and recovery from spent pulping liquor. These include methods such as precipitation, electrocoagulation, ultrafiltration, ion exchange, reverse osmosis, ozonation and electrolysis [7, 8]. However, these methods have their drawbacks. For example, by using the acid precipitation, the acid sludge is corrosive and non-ecofriendly. In addition, these methods are expensive and tedious especially when operated in large scale.

*Corresponding author. E-mail: norasikin@cheme.utm.my
 (Norasikin Othman) Tel: (60)-7-5535561, Fax : (60)-7-5536165

Liquid membrane process has high potential in the removal of kraft lignin from simulated liquid waste solution. So far it has its main application in the field of metaextraction[9]. Besides that, it also has been certified in removing organic wastewater such as chlorophenol[10], phenylenediamine[11], benzimidazole[12]and phenol [13].It is also applied in industrial scale for recovery of phenol and zinc from wastewater.The treatment on mixtures of macromolecules, especially those with charged is still an attractive and challenging new field for this research. The importance of the many polyelectrolytes is the evident from both scientific and industrial points of view.

This study attempted to develop a liquid membrane formulation for kraft lignin removal from aqueous waste solution using LLE. It is the preliminary study for screening the parameters which related to ELM process.LLE is based on the principle that a solute can distribute itself in a certain ratio between immiscible solvents and extraction process depends on its mass transfer rate [14]. The extraction is based on ion-exchange reaction between a carrier dissolved in an oil phase which is kerosene and kraft lignin solution. Different affect parameters were investigated such as types of carrier, concentration of carrier, types of diluents and types of stripping agents.

2. EXPERIMENTAL

2.1. Chemicals and Reagents

All the reagents were of analytical grade and used without further purification. The following carriers were used: Trioctylamine (TOA), Tridodecylamine (TDA) from Merck (Germany), Tricaprylylmethylammonium chloride (Aliquat 336) and Tri-n-octylphosphine Oxide (TOPO) from Acros, Tributyl Phosphate(TBP) and Bis(2-ethylhexyl)-Phosphat (D2EHPA) from Merck, Diisooctylthiophosphinic acid(Cyanex302) from Fluka. Solvent screening was carried out with n-dodecane from Merck (Germany) and kerosene was obtained from Sigma-Aldrich. Different stripping agents were used includes sodium hydroxide (NaOH), sodium chloride (NaCl),sodium carbonate(Na₂CO₃), sodium bicarbonate (NaHCO₃), sodium silicate(Na₂SiO₃), hydrochloric acid (HCl), sulphuric acid (H₂SO₄)which are procured from Merck (Germany). Kraft lignin (KL) was procured from Sigma-Aldrich.

2.2. Liquid-liquid extraction

The experiments on forward extraction were carried out by mixing an equal volume (10ml) of kraft lignin solution and organic-carrier solutions using a mechanical shaker at 320 rpm for a period of 18 hours. The mixture was then transferred into a separating funnel with cautions. After the phase separations (around 15-30 minutes), sample of aqueous solution at the bottom was carefully separated from the organic phase. The amount of kraft lignin in the aqueous

phase was determined by UV-vis spectrophotometer while that in the organic phase was obtained from the material balance. The procedures were repeated to obtain the best carrier and diluent in kraft lignin extraction. The effect of carrier concentration was investigated in order to determine the nature of kraft lignin extraction in selected extractant. The distribution ratio (D) and percentage of extraction (E) were calculated by the following formula:

$$D = \frac{[KL]_{org}}{[KL]_{aq}}$$

$$\%E = \frac{[KL]_{aq0} - [KL]_{aq}}{[KL]_{aq0}}$$

where $[KL]_{org}$ is the kraft lignin concentration in the organic phase(mg/L), $[KL]_{aq0}$ is the initial KL concentration of aqueous phase(mg/L), $[KL]_{aq}$ is the KL concentration of aqueous phase after extraction(mg/L).

In the stripping process, the experiment was designed to identify the best choice of stripping agent. Stripping process was the reverse extraction step. Therefore, organic phase (kraft lignin loaded carrier) was taken from extraction process and similar procedures were repeated using various stripping agents.

2.3. Analytical Instruments

A UV-vis spectrophotometer (Jenway 7305 Spectrophotometer) was used for measurement of kraft lignin concentration in the aqueous phase. A calibration curve has been generated using known concentration of kraft lignin within the range of 0–100mg l⁻¹ at 280 nm wavelength. The FTIR spectra of the lignin samples embedded in a KBR disk were obtained with a FTIR-spectrophotometer in a frequency range of 500 to 4000 cm⁻¹. Fig. 2 shows the IR spectra of the kraft lignin. A strong peak at 3355 cm⁻¹ is characteristic peak of phenolic compounds or OH groups and peak at 2937cm⁻¹ is assigned to CH stretching of methyl or methylene groups. 1512 cm⁻¹ and 1593cm⁻¹ is characterized as aromatic ring while 1452 cm⁻¹ and 1424 cm⁻¹ have attributed to methoxyl groups. The ether-O- at 1030 cm⁻¹ was very intense. It is more difficult to make a detailed analysis of the spectral region below 1400 cm⁻¹. This is due to the complex bands and it contributed by various vibrational modes[15, 16].

3. RESULTS & DISCUSSION

3.1. Choice of carrier

Selection of carrier is the most important factor in liquid-liquid extraction process. Different types of carrier were used such as acidic carrier(D2EHPA and Cyanex 302), basic carrier (TOA, TDA and Aliquat 336), and solvating carrier (TOPO and TBP). Table 1 shows that the highest percentage of Kraft lignin (KL) extraction is

performed by using Aliquat 336. Aliquat 336 is a quaternary ammonium salt. There is no literature shows on liquid-liquid extraction of KL. Kraft lignin has two kinds of ionizing groups (SH and OH⁻). The anionic charge of Kraft lignin will react with the positive charge of Aliquat 336 in ion-exchange reaction. Thus, Aliquat 336 has been chosen as carrier in KL extraction study.

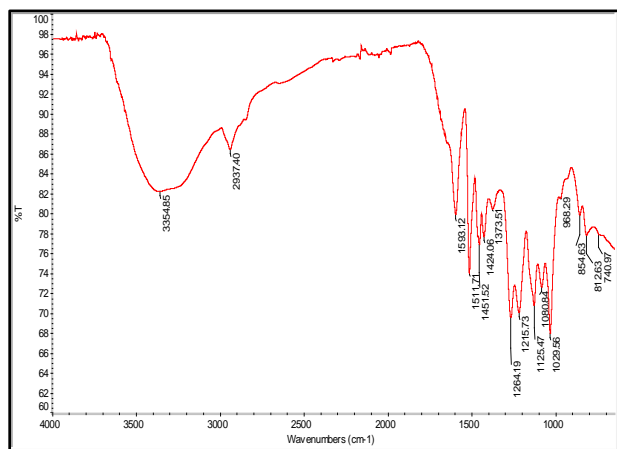


Fig. 2. FTIR spectra of kraft lignin.

3.2. Choice of carrier

Selection of carrier is the most important factor in liquid-liquid extraction process. Different types of carrier were used such as acidic carrier (D2EHPA and Cyanex 302), basic carrier (TOA, TDA and Aliquat 336), and solvating carrier (TOPO and TBP). Table 1 shows that the highest percentage of Kraft lignin (KL) extraction is performed by using Aliquat 336. Aliquat 336 is a quaternary ammonium salt. There is no literature shows on liquid-liquid extraction of KL. Kraft lignin has two kinds of ionizing groups (SH and OH⁻). The anionic charge of Kraft lignin will react with the positive charge of Aliquat 336 in ion-exchange reaction. Thus, Aliquat 336 has been chosen as carrier in KL extraction study.

3.3. Choice of Diluents

Diluents should be chosen based on the immiscibility with the aqueous solution, viscosity, specific gravity, volatility and number of carbon. The extraction was carried out using two different types of diluents which are kerosene and n-dodecane. The result shows in Table 2 indicate that the extraction percentage using kerosene as diluent is 93% which is higher than dodecane. This is due to the less solubility of Aliquat 336 in dodecane as observed. Additional modifier is needed if dodecane is used as diluent. Hence, kerosene is chosen as diluent due to its less toxic and low in dielectric constant (1.8) is preferred [17].

Table 1. Liquid-liquid extraction of Kraft lignin (Experimental conditions: [KL] = 100ppm, [carrier] = 0.5M, agitation speed=320rpm, duration = 18 hrs, T= 26°C, diluents: kerosene, pH=8, Treat ratio: 1:1).

Groups	Carrier	% Extraction
Basic	Tricaprylmethylammonium chloride (Aliquat 336)	93
	Tridodecylamine (TDA)	18
	Trioctylamine (TOA)	0
Solvating	Tri-n-octylphosphine Oxide (TOPO)	6
	Tributyl Phosphate (TBP)	0
	Diisooctylthiophosphinic acid (Cyanex 302)	0
Acidic	Bis(2-ethylhexyl)-Phosphat (D2EHPA)	0

Table 2. Effect of different diluents in liquid-liquid extraction. (Experimental conditions: [KL] = 100ppm, [Aliquat 336] = 0.5M, agitation speed=320rpm, duration = 18 hrs, T= 26°C, pH=8, Treat ratio: 1:1).

Diluents	% Extraction
Kerosene	93
n-dodecane	71

3.4. Effect of Carrier Concentration

The effects of Aliquat 336 concentration within 0.003-0.3M based on the extraction of KL from the aqueous solution were being presented in Fig. 3. The results show that the percentage of KL extraction increased drastically up to 0.1M. Further increase the carrier concentration, the extraction percentage increase and achieves plateau. It indicates the excess of 'free extractant'. At this region, the percentage of KL is almost 90%. Hence, 0.1M of Aliquat 336 has been chosen for the next parameters.

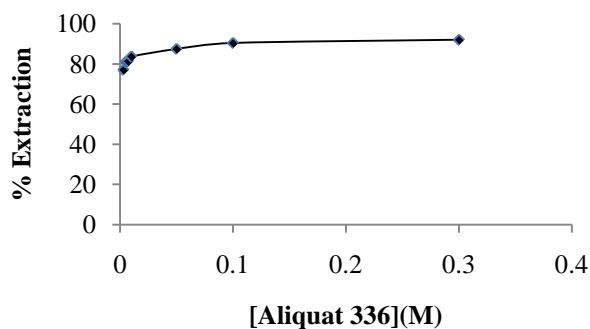


Fig. 3. Effect of carrier concentration in liquid-liquid extraction (Experiment conditions: [KL] = 100ppm, Carrier:

Aliquat 336, agitation speed=320rpm, duration = 18 hrs, T= 26°C, diluents: kerosene, pH=8, Treat ratio: 1:1).

The nature of the extracted KL was evaluated by the plot of log D versus log [Aliquat336] in Fig. 4. The slope obtained is 3.592 is nearly equal to 4. Hence, the kraft lignin to reagent ratio was found to be 1:4. Therefore, it indicates that one mole of KL requires four mole of Aliquat 336 for extraction taken place. It justifies that bulky macromolecule of kraft lignin required large amount of carriers for extraction process.

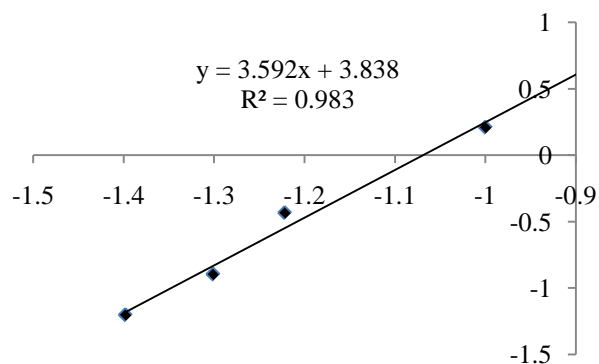


Fig. 4. Stoichiometric plot for the equilibrium extraction of KL using Aliquat 336 as carrier and kerosene as solvent.

3.5. Choice of Stripping Agent

The choice of stripping agent plays an important role in KL recovery and minimizing the co-transport of water in the extraction process. KL loaded organic solution from liquid-liquid extraction was examined in stripping process by using various types of stripping agents which are NaOH, NaCl, Sodium carbonate (Na₂CO₃), Hydrochloric acid (HCl), acid sulphuric (H₂SO₄), sodium silicate (Na₂SiO₃), sodium bicarbonate (NaHCO₃). The results illustrated in Fig. 5. From the results, the stripping percentage is not high. Higher stripping percentage goes to NaOH, HCl and NaHCO₃ which range from 15-20%. Emulsion liquid membrane process that combines extraction and stripping in one step was carried on in kraft lignin removal. The validity of NaOH, HCl and NaHCO₃ as stripping agent was observed in Fig. 6. The results show that NaHCO₃ achieve highest extraction which is 97% of KL extraction. Hence, NaHCO₃ was chosen as the best stripping agent.

4. CONCLUSION

The method presented offers a simple approach for selective extraction of Kraft lignin for removal and recovery. It can be concluded the best liquid membrane formulation obtained is by using Aliquat 336 as carrier, kerosene as diluents and NaHCO₃ as stripping agent.

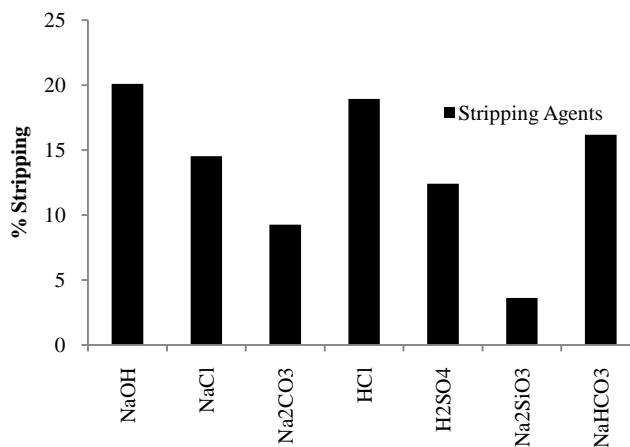


Fig. 5. Effect of different stripping agent in liquid-liquid extraction (Experiment conditions: [KL] = 100ppm, [Aliquat336] = 0.01M, agitation speed=320rpm, duration = 18 hrs, T= 26°C, diluents: kerosene, pH=3, Treat ratio: 1:1).

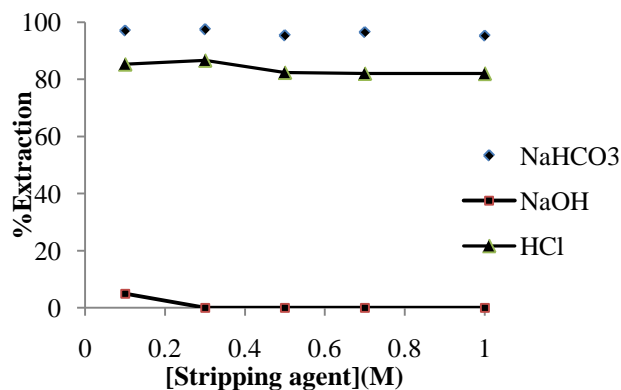


Fig. 6. Effect of types and concentration of stripping agent on kraft lignin extraction (Experimental conditions: [Aliquat 336]:0.1M, Homogenizer Speed: 12 000 rpm, Emulsifying Time: 5 minutes, Initial kraft lignin Concentration: 100 ppm, Treat Ratio: 1:5, [Span 80]: 3%w/v ,Agitation Speed: 250 rpm, Extraction Time: 5 minutes)

ACKNOWLEDGEMENT

The author would like to acknowledge Ministry of Higher Education(MOHE)and UniversitiTeknologi Malaysia (GUP:Q.J130000.7125.00H35) for financial support to make this research possible.

NOMENCLATURE

Aliquat 336	Tricaprylylmethylammonium chloride
ELM	Emulsion Liquid membrane
LLE	Liquid-liquid extraction
V _m	volume membrane/organic phase
V _f	volume feed phase
[Aliquat 336]	concentration of Aliquat 336

KL kraft lignin
D distribution ratio

REFERENCES

- [1] M. Ali and T.R. Sreekrishnan, *Process Biochem.*, 36 (2000) 25-29.
- [2] J. Kallas, and R. Munter, *Water Sci. Technol.*, 29 (1994) 259-272.
- [3] G. Thompson, J. Swain, M. Kay, and C.F. Forster, *Bioresource Technol.*, 77 (2001) 275-286.
- [4] C. Xiao, R. Bolton, and W.L. Pan, *Bioresource Technol.*, 98 (2007) 1482-1488.
- [5] D. Mohan, C.U. Pittman Jr, and P.H. Steele, *J. Colloid Interf. Sci.*, 297 (2006) 489-504.
- [6] A.L. Macfarlane, R. Prestidge, M.M. Farid, and J.J.J. Chen, *Chem. Eng. J.*, 148 (2009) 15-19.
- [7] G. Liu, Y. Liu, J. Ni, H. Shi, and Y. Qian, *Desalination*, 160 (2004) 131-141.
- [8] O. Wallberg and A.-S. Jönsson, *Desalination*, 195 (2006) 187-200.
- [9] B. Sengupta, M.S. Bhakhar, and R. Sengupta, *Hydrometallurgy*, 99 (2009) 25-32.
- [10] C.-C. Lin and R.L. Long, *Chem. Eng. Commun.*, 156 (1997) 45-58.
- [11] L. Chuannan, X. Zhongpeng, W. Xueying, and L. Zhen, 3rd International Conference on Bioinformatics and Biomedical Engineering (ICBBE), 11-13 June 2009, Beijing, p. 1-4.
- [12] S. Venkatesan and K.M. Meera Sheriffa Begum, *Chem. Eng. J.*, 148 (2009) 254-262.
- [13] Y.S. Ng, N.S. Jayakumar, and M.A. Hashim, *J. Hazard. Mater.*, 184 (2010) 255-260.
- [14] D.W. Lee, W.H. Hong, and K.Y. Hwang, *Separ. Sci. Technol.*, 35 (2000) 1951-1962.
- [15] M.N. Mohamad Ibrahim, N. Zakaria, C.S. Sipaut, O. Sulaiman, and R. Hashim, *Carbohydr. Polym.*, 86 (2011) 112-119.
- [16] N.E. El-Mansouri, Q. Yuan, and F. Huang, *Bioresources Technol.*, 6 (2011) 2647-2662.
- [17] N.E. El-Hefny, Y.A. El-Nadi, and I.M. Ahmed, *Int. J. Miner. Process.*, 101 (2011) 58-62.